



SAW Components

Data Sheet B7703





SAW Components

B7703

Low-Loss Filter for Mobile Communication

836,5 MHz

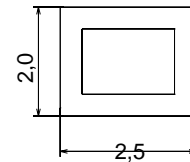
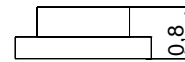
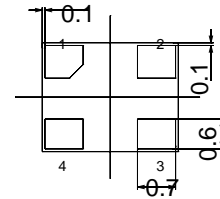
Data Sheet



Chip Sized SAW Package DCS4C

Features

- Low-loss RF filter for mobile telephone AMPS systems, transmit path
- Low amplitude ripple
- Usable passband 25 MHz
- Package for Surface Mounted Technology (SMT)



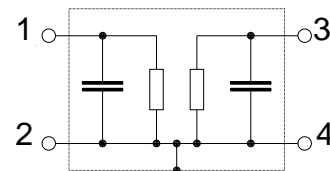
Dimensions in mm, approx. weight 0,015 g

Terminals

- Gold-plated Ni

Pin configuration

- 1 Input
- 3 Output
- 2, 4 Ground



Type	Ordering code	Marking and Package according to	Packing according to
B7703	B39841-B7703-C510	C61157-A7-A80	F61074-V8104-Z000

Electrostatic Sensitive Device (ESD)

Maximum ratings

Operating temperature range	T	- 30/+ 85	°C	Human Body Model source impedance 50 Ω
Storage temperature range	T_{stg}	- 40/+ 85	°C	
DC voltage	V_{DC}	5	V	
ESD	V_{ESD}	50	V	
Input Power max.	P_{IN}	15	dBm	



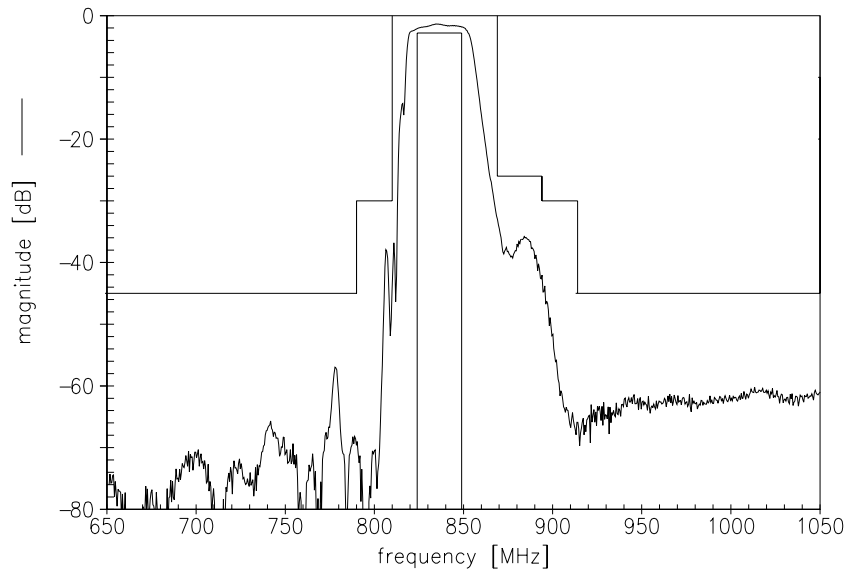
Characteristics

Operating temperature range: $T = -30$ to $+85$ °C
 Terminating source impedance: $Z_S = 50 \Omega$
 Terminating load impedance: $Z_L = 50 \Omega$

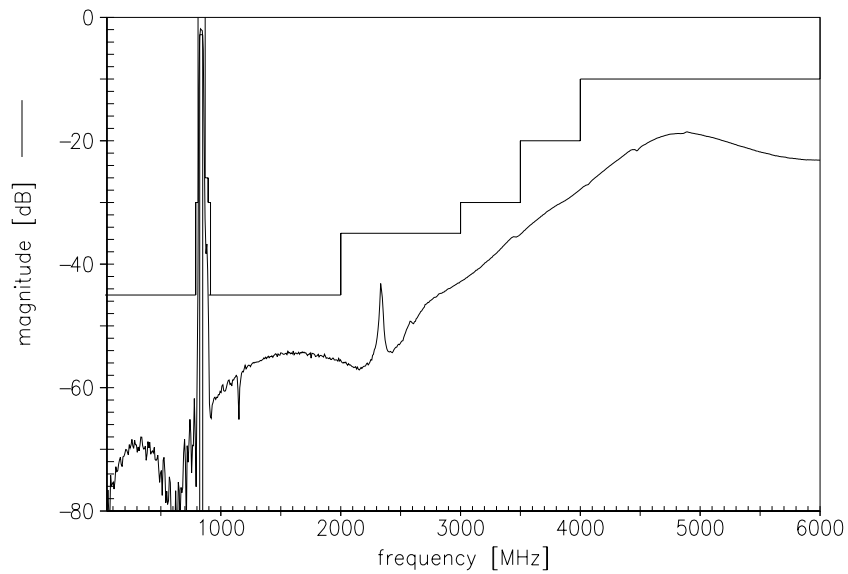
			min.	typ.	max.	
Center frequency	f_C		—	836,5	—	MHz
Maximum insertion attenuation	α_{max}	824,0 ... 849,0 MHz	—	2,5	2,8	dB
Amplitude ripple (p-p)	$\Delta\alpha$	824,0 ... 849,0 MHz	—	0,9	1,3	dB
Return loss		824,0 ... 849,0 MHz	—	12,0	10,0	dB
Attenuation	α	0,0 ... 790,0 MHz	45,0	56,0	—	dB
		790,0 ... 810,0 MHz	30,0	35,0	—	dB
		869,0 ... 894,0 MHz	26,0	29,0	—	dB
		894,0 ... 914,0 MHz	30,0	40,0	—	dB
		914,0 ... 2000,0 MHz	45,0	50,0	—	dB
		2000,0 ... 3000,0 MHz	35,0	40,0	—	dB
		3000,0 ... 3500,0 MHz	30,0	35,0	—	dB
		3500,0 ... 4000,0 MHz	20,0	25,0	—	dB
		4000,0 ... 6000,0 MHz	10,0	18,0	—	dB
Rx band suppression	α	869,0 ... 894,0 MHz	26,0	29,0	—	dB



Transfer function

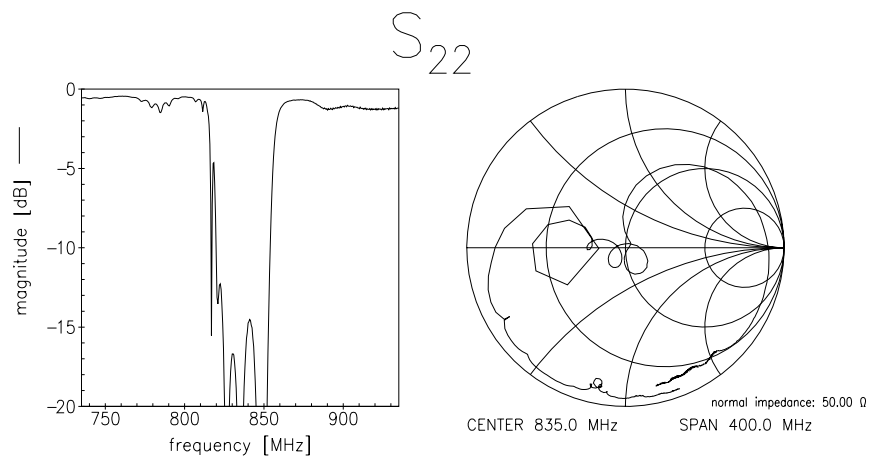
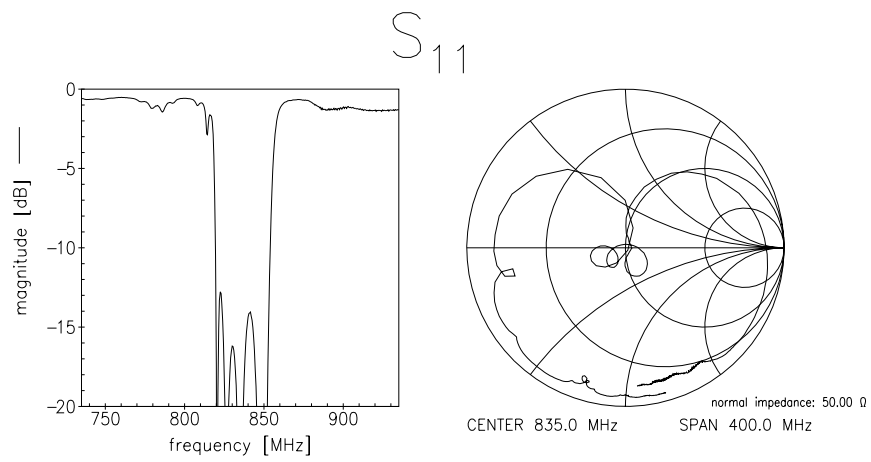


Transfer function (wideband)





Reflection functions





SAW Components

B7703

Low-Loss Filter for Mobile Communication

836,5 MHz

Data Sheet



Published by EPCOS AG

Surface Acoustic Wave Components Division, SAW MC WT PD

P.O. Box 80 17 09, D-81617 München

© EPCOS AG 2001. All Rights Reserved. Reproduction, publication and dissemination of this brochure and the information contained therein without EPCOS' prior express consent is prohibited.

The information contained in this brochure describes the type of component and shall not be considered as guaranteed characteristics. Purchase orders are subject to the General Conditions for the Supply of Products and Services of the Electrical and Electronics Industry recommended by the ZVEI (German Electrical and Electronic Manufacturers' Association), unless otherwise agreed.

This brochure replaces the previous edition.

For questions on technology, prices and delivery please contact the Sales Offices of EPCOS AG or the international Representatives.

Due to technical requirements components may contain dangerous substances. For information on the type in question please also contact one of our Sales Offices.